

# Hanger Pin Installation

# ECHO ABSORBER™ Natural

## Tools and Materials Needed

- Hanger Pin Kit - 6 Hanger Pins, 6 Lock Washers and 6 Caps per 2 ft. X 4 ft. Panel
- 1 Tube of Polyurethane Adhesive per 60 Hanger Pins
- 1 Can of Misty Spray Adhesive per 2 – 2 ft. X 4 ft. Panels
- 24 in. or 48 in. Level
- Utility Knife
- Sandpaper (150 grit or lower) for smooth surfaces
- Tape Measure & Pencil
- Gloves

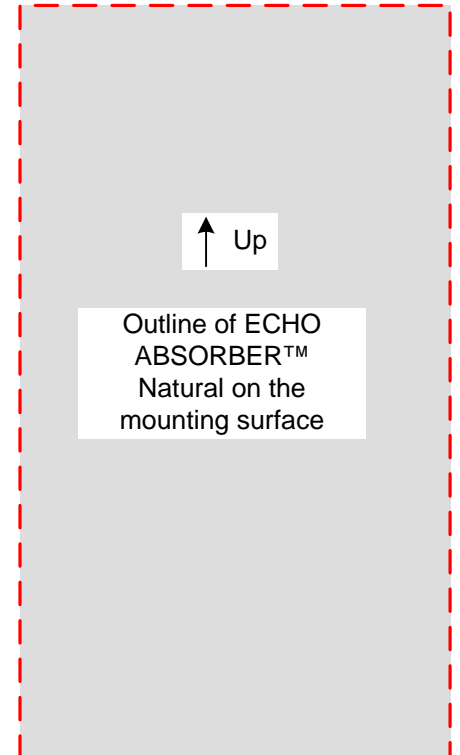
## Step 1

### Note:

These instructions were created for the installation of ECHO ABSORBER™ Natural with the dimensions of 2 ft. X 4 ft. and to be installed on an existing wall or mounting surface. One can adapt these instructions for a variety of sizes and applications. Use our instructions as a general guide. General rules that apply are: place Hanger Pins at least 2 in. in from edges of the material; place the Hanger Pins At most 24 in. apart and Use our recommended adhesives. Cutting this material before it is installed is easier. To cut, lay the material on a flat clean surface. Compress the material with a straight edge or level and cut with a sharp utility knife. For a quick cut, use a 6 ½ in. framing saw.

**1)** Wall surface or mounting surface should be clean and free of any obstructions. If a cleaner is needed, be sure to use one that will not leave a film or residue. Make sure there is no dirt or particles on the backside of the ECHO ABSORBER™ Natural.

**2)** Using a 48 In. Level and a Pencil, create some reference lines where the edges of the ECHO ABSORBER™ Natural will be when installed. **(A)**

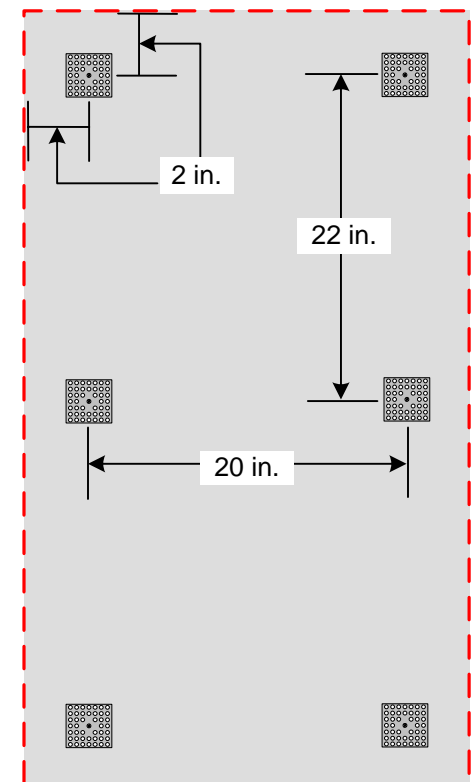


## Step 2

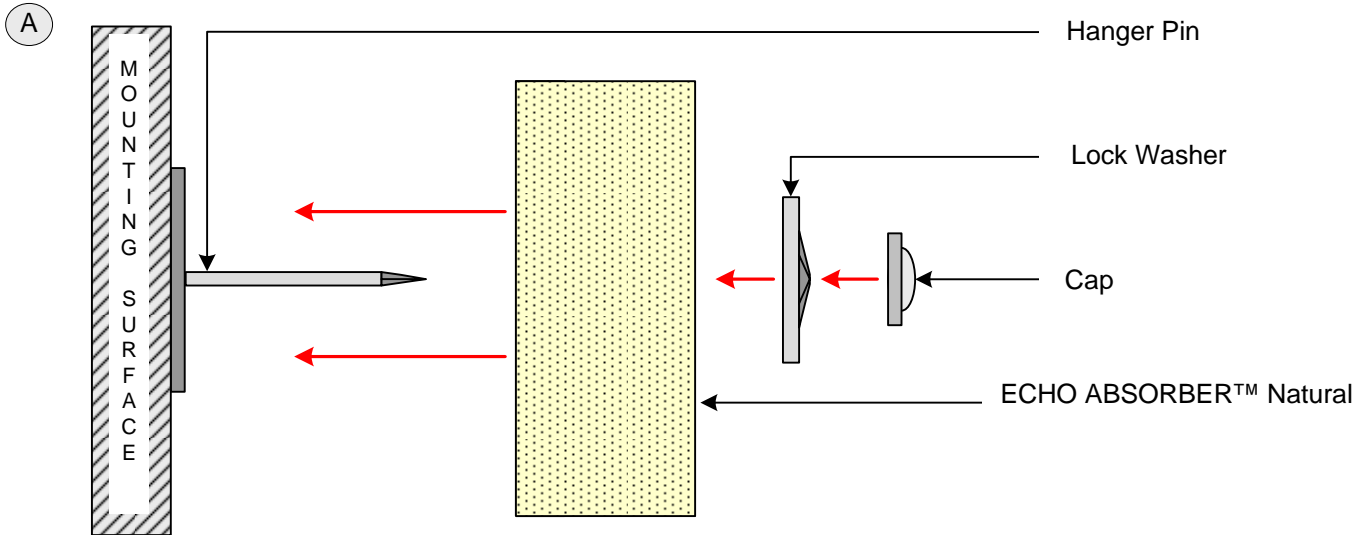
**1)** With our Polyurethane Adhesive, apply a 1 in. round dot and attach the Hanger Pins to the mounting surface. Rough smooth surfaces with 150 grit (or lower) Sandpaper. Start with the Hanger Pins closest to the edge of the ECHO ABSORBER™ Natural. Using the reference lines as a guide, adhere the Hanger Pins 2 in. in from all of the finished installed edges of the ECHO ABSORBER™ Natural. Clean off excess adhesive.

**2)** Place the remaining Hanger Pins approximately every 20 to 22 in. apart. The objective is to create an evenly spaced grid of Hanger Pins.

**3)** Let the adhesive cure for approximately 24 hours before installing the ECHO ABSORBER™ Natural panel. Please follow all of the instructions on the adhesive container.



- 1) Place the ECHO ABSORBER™ Natural on a flat clean surface with the exposed side down.
- 2) Generously apply the Misty Spray Adhesive to the mounting surface and to the back of the ECHO ABSORBER™ Natural. It is important to let the Misty Spray Adhesive tack up before installing. 5 minutes should be plenty of time. Refer to the instructions on the container for additional information.
- 3) Mount the ECHO ABSORBER™ Natural by starting with the top Hanger Pins and working downward. Push the ECHO ABSORBER™ Natural onto the Hanger Pins using the reference lines as a guide. Gloves should be worn for your protection during this step. Attach a Lock Washer and a Cap as shown. **(A)**



1) Installed appearance with the Lock Washers and Caps. **(A)**

2) Using your first installed panel as a reference, repeat steps 1 thru 4 if more ECHO ABSORBER™ Natural is needed.

